



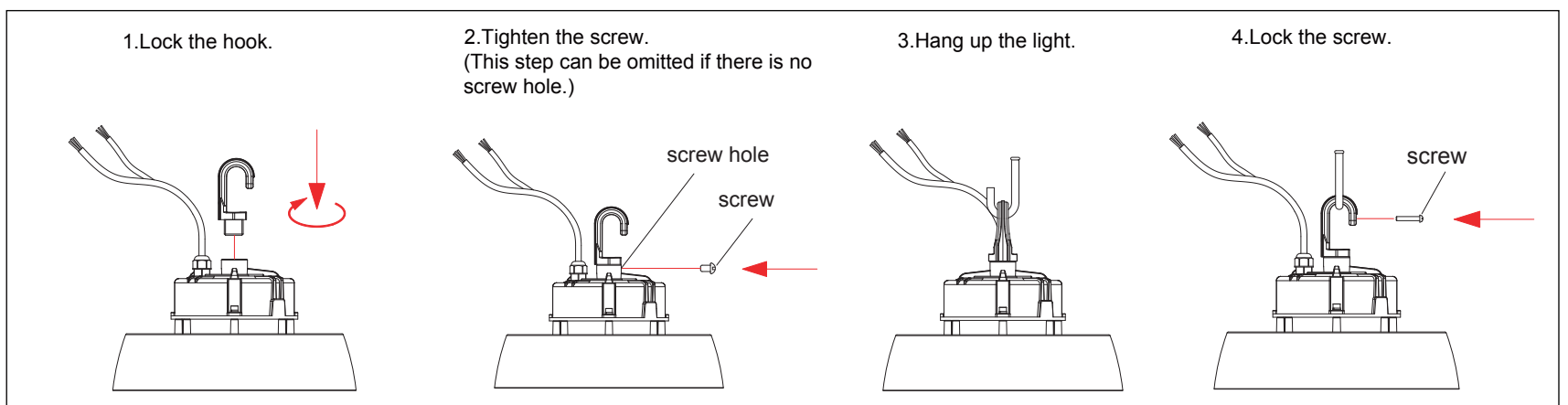
UFO HIGH BAY INSTALLATION INSTRUCTIONS

MORRIS CAT#: 74108B

⚠ Warning

- Please make sure to operate the UFO Highbay under correct input voltage: 100-277V
- If input voltage exceeds rated range, it may cause fixture failure
- Ensure operating environment for this fixture is within the temperature range of -40°F(-40°C) through 122°F(50°C).
- This fixture is to be installed by a licensed electrician only, abiding by all local and national electrical codes

Installation Instruction



Wiring Connection

Wire this fixture as per the wiring diagram below.

1. Compatible with 0-10V dimming.
2. Connect wires as below, purple wire is D+, pink wire is D-, cap Black/White wire.

